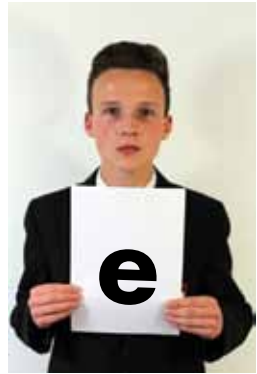
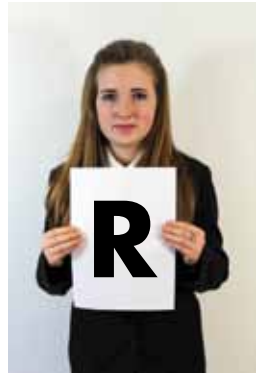
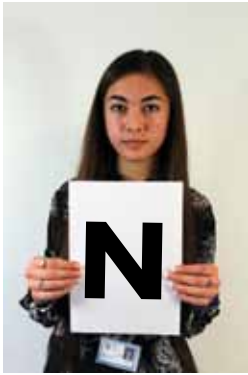
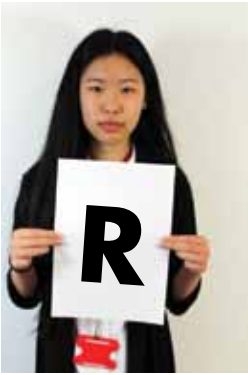
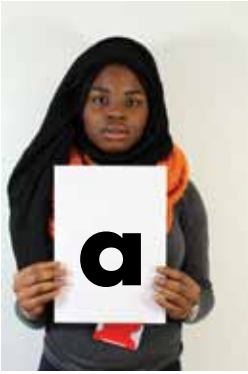


The



Prize 2014

**The
aTURNERtive
Prize 2014**

Introduction

Schools are constantly in a state of flux; students graduate, staff move on, government ideologies change. The aTURNERtive Prize was established in 2002. The exhibition was set up to champion the work of our students and timed to coincide with the Turner Prize at the Tate. Events like the aTURNERtive Prize are unusual, they may occur as a one off, but it is exceedingly rare for them to become embedded within a school's annual calendar or indeed to garner so much attention from outside the school institution.

The prize evolves every year and marks the current concerns of the artists involved. I am always impressed by the diverse nature of the work tackled by our students. The breadth of issues and approaches that are confronted easily rivals those found on degree courses. Every year has been remarkably different, highlighting the innovative approach to art education for which Welling School is now renowned.

It has been an exciting few months for our students as they not only embrace the possibilities of the new school year but also those opportunities presented by our growing relationship with external institutions. Welling School's regular schedule of exhibitions at the Berwick Road Gallery have been supplemented for selected students this year who have also had the opportunity to exhibit in both The Hayward and Whitechapel Galleries. We are honoured to be embraced by such influential organisations and are eager to continue to offer these opportunities to our students.

Over the years we have built strong relationships with the broader art world. Our list of previous judges and presenters reads a little like a who's who of the Art world. This year is no exception as we welcome the Whitechapel Gallery's Head of Education & Public Programmes Sofia Victorino as a judge and the internationally exhibited artist Peter Liversidge to present the prize.

The aTURNERtive Prize demonstrates annually how we should aspire to see the art made in school as not made by "Students" but rather by "Artists". The aTURNERtive prize is the distillation of what makes Welling...Welling. I am hugely proud of the staff and students who make the furtherment of Art and Artistic ideals their goal.

Andee Collard.

Head of Specialism.



Habibat Alabi

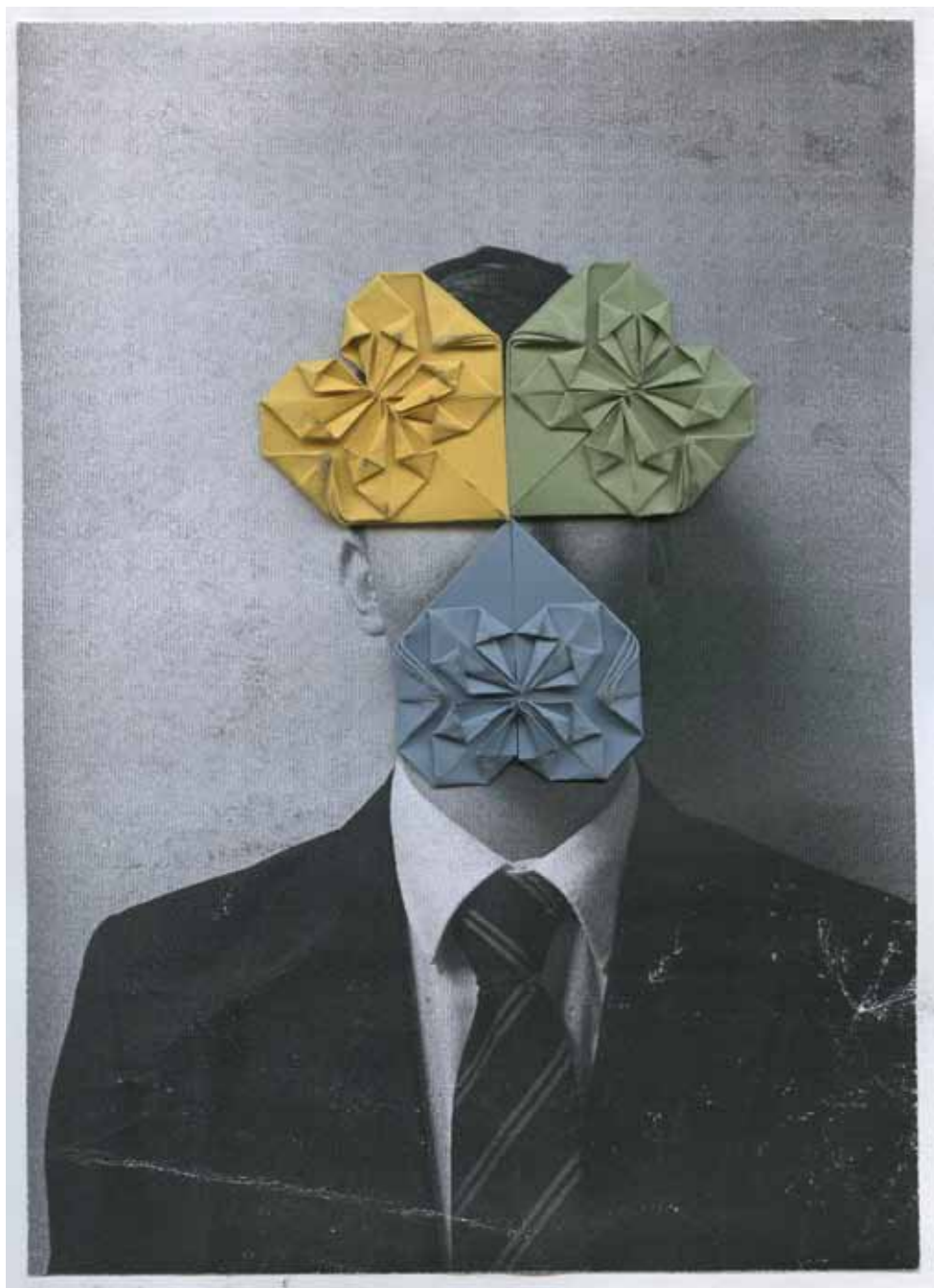
Habibat Alabi is an artist who has an obvious engagement with and a rigour in her exploration of ideas. Habibat is more than comfortable using a wide range of processes and materials to fulfil her visual and conceptual enquiries. Habibat has been nominated for her exploration of "The Invisible" through the process of both still photography and moving image. Habibat is currently studying AS Fine Art.



A young man with dark hair, wearing a dark suit jacket over a white shirt, is holding a white rectangular sign in front of his chest. The sign contains text about an artist named Simas Cesnauskas. The background is a plain, light color.

Simas Cesnauskas

Simas is an exceptional artist. He commits himself to experimenting with materials and pushing them to their full capacity. Simas' origami pieces explore the quality of surface and image; distorting the face into grotesque flesh like forms. The result of Simas' distorted portraits leave the viewer feeling uncertain and uneasy. Simas is a Welling School Art Scholar and is currently studying GCSE Fine Art.



A young man with short dark hair, wearing a dark suit jacket, white shirt, and tie, is holding a white rectangular sign in front of his chest. He has a neutral expression and is looking directly at the camera. The background is a plain, light color.

Robert Conner

Robert Conner has a background in Fine Art but is currently exploring Photography. Robert has been nominated for his series of works "Hiding in Plain Sight", in which he disguises himself in full army fatigues including camouflage paint and hides around the school site. The photographs that document this process at first appear mundane, only later revealing their literally hidden meaning. Robert is a Welling School Art Scholar and is currently studying GCSE Photography.





Rianna Constantinou

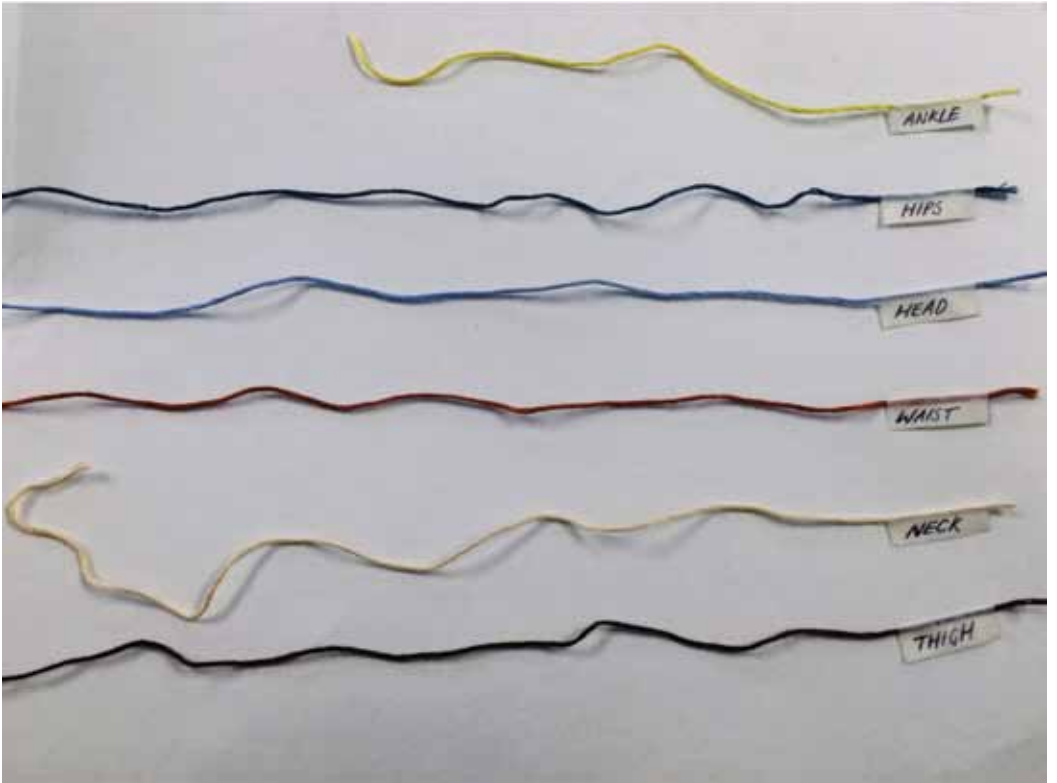
Rihanna Constantinou is able to explore a wide range of processes and materials to produce exciting and meaningful outcomes. Rianna's organic fabrication is underpinned by contextual understanding. She physically explores materials so that she understands their quality and potential, and uses this knowledge to produce well considered outcomes. Rianna is currently studying A2 Fine Art and Photography.



A young woman with long, straight black hair is centered in the frame. She is wearing a dark-colored jacket over a white collared shirt. She is holding a white rectangular sign in front of her chest with both hands. The sign contains text about her as an artist. The background is a plain, light-colored wall.

Kenix Lau

Kenix Lau is an artist who, over the last few years, has developed a rigorous conceptual practice which manifests itself in exciting and unexpected outcomes using a wide range of materials and processes. Kenix has explored elements of both the physical and emotional world through measurement, using herself as the physical measure, explored through the processes of sculpture, appropriation, still photography and drawing. Kenix is currently studying AS Fine Art.





Chloe Leigh

Chloe Leigh has been nominated for her committed approach to Street Photography. She is dedicated to looking for the moments that will best serve her ideas and spends hours searching day and night for the right light, stories and compositions. Her sketchbooks form a rich tapestry of the connections between thousands of initially unrelated starting points and she skillfully makes narratives based on key found moments. Chloe is currently studying A2 Graphic Design and Photography.



A young woman with long brown hair and bangs, wearing a dark sleeveless top, is holding a white rectangular sign in front of her. The background is a plain, light-colored wall. The sign contains text about her as an artist.

Taylor Lyttleton

Taylor Lyttleton is an Artist who is comfortable with working in both photography and painting. Her recent photographic work combines her two interests as she investigates the preservation of still life through photography. Taylor's work hints at inspiration from 17th Century Vanitas paintings. Taylor is currently studying AS Photography.



A portrait of Nicole Malcolm, a young woman with long brown hair, wearing a dark blazer over a white collared shirt. She is holding a white rectangular sign in front of her chest with both hands. The background is a plain, light color.

Nicole Malcolm

Nicole Malcolm has been nominated for her work exploring Textiles. Nicole plays with the idea of disguising objects using traditional craft forms such as knitting, juxtaposing the purpose of the object with the aesthetic of the hand crafted textile. Nicole has experimented with scale and size, developing the object and packaging into a human sized disguise and has investigated this garment's performative possibilities. Nicole is a Welling School Art Scholar and is currently studying GCSE Graphic Design and Textiles.





Charlie Mead

Charlie Mead was nominated for his small sculptural pieces using found objects; a dictionary, a candle, a pen, a roll of tape, all seemingly selected at random. These are cut into and adapted.

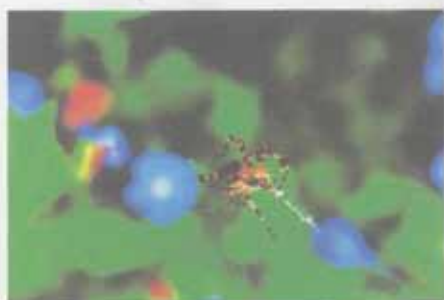
The original purpose is removed and they lose their function to become Art Objects. Charlie's practice involves laborious process and the painstaking emulation of craftsmanship is a theme within his work. The final result in both cases is uncomfortable. It is at once impressive in its obvious display of technical skill and utterly devoid of any real meaning or depth. This links with Charlie's interest in anti-art. Charlie is currently studying AS Fine Art and Graphic Design.





Julia Misheva

Julia Misheva 's nomination is the result of her rigorous, committed practice. Working in a range of artistic mediums her independent practice traverses across disciplines. In Julia's current body of work she explores the distortion of ideas and meaning through installation. Julia's work plays with words; their status as information and their interrelationship with the visual world. Julia is currently studying AS Fine Art and Graphic Design.





Toni Moore

Toni Moore is an artist who over the last three years has explored ideas around sculpture and the possibilities inherent within it. Toni's work makes us aware of overlooked spaces and elevates these mundane experiences into beautifully poetic sculptural pieces. Toni explores the hidden sculptural elements found in architectural spaces, through the processes of still photography and sculptural interventions. Toni is currently studying A2 Fine Art.



A young man with dark hair, wearing a dark suit jacket over a white collared shirt, is holding a white rectangular sign in front of his chest. The sign contains text about Cray Smith. The background is a plain, light color.

Cray Smith

Cray Smith has a meticulous approach to his photographic practice. He explores the use of settings and is interested in the effects that he and his camera can produce. Cray uses props, toys and other household goods to play with scale and presents them in a way that promotes connections and meta-narratives. Cray is currently studying GCSE Photography.



Past Winners

2002 - Toni Wilson

2003 - Nicky Field

2004 - Holly Coventry

2005 - Kate Lovell

2006 - Jon Long

2007 - Rachel Robertson

2008 - Joseph Smith

2009 - Layla Fay

2010 - Camilla Price

2011 - Tiffany Webster

2012 - Holly Gibson

2013 - Thomas Madden

Habibat Alabi
Simas Cesnauskas
Robert Conner
Rianna Constantinou
Kenix Lau
Chloe Leigh
Taylor Lyttleton
Nicole Malcolm
Charlie Mead
Julia Misheva
Toni Moore
Cray Smith